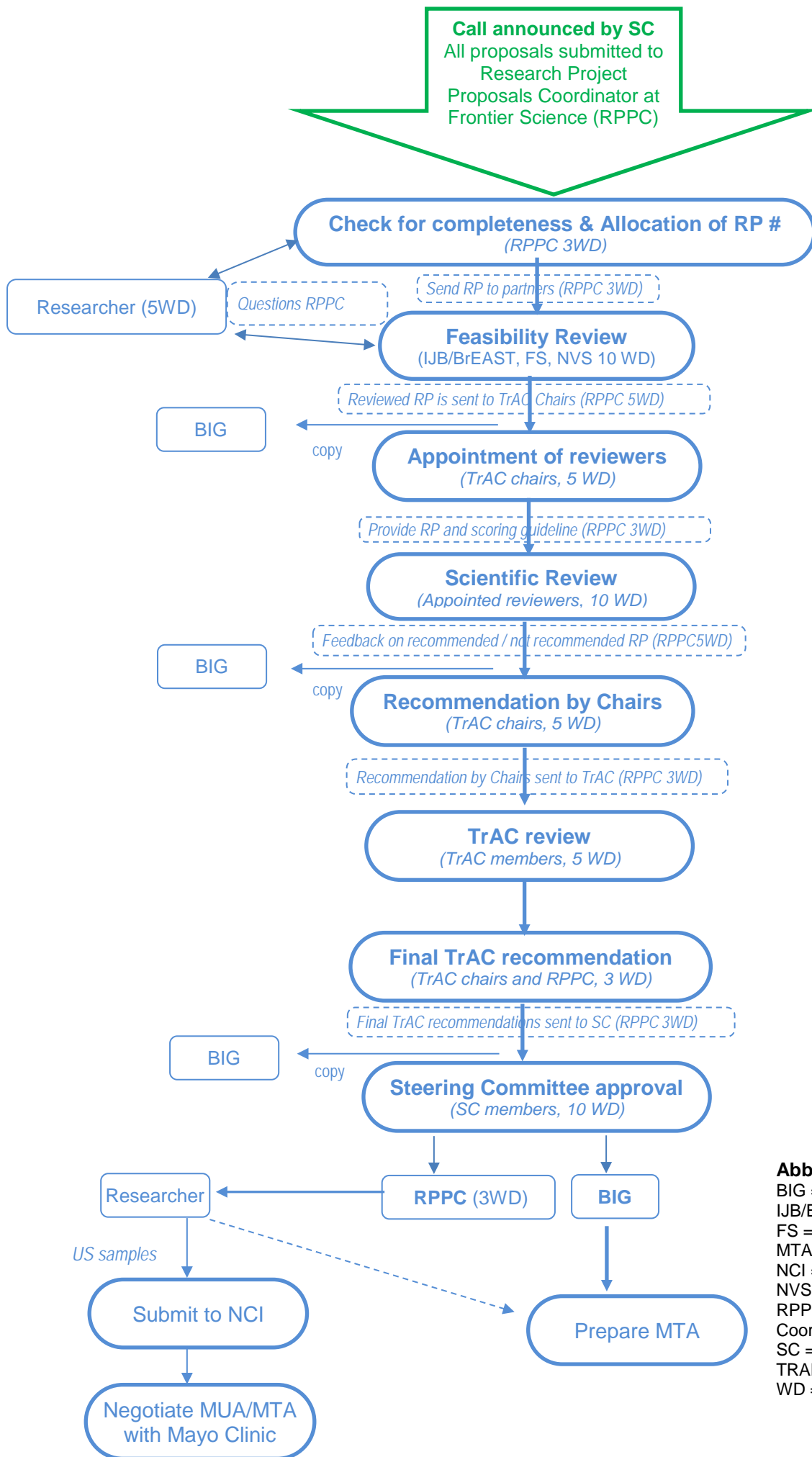


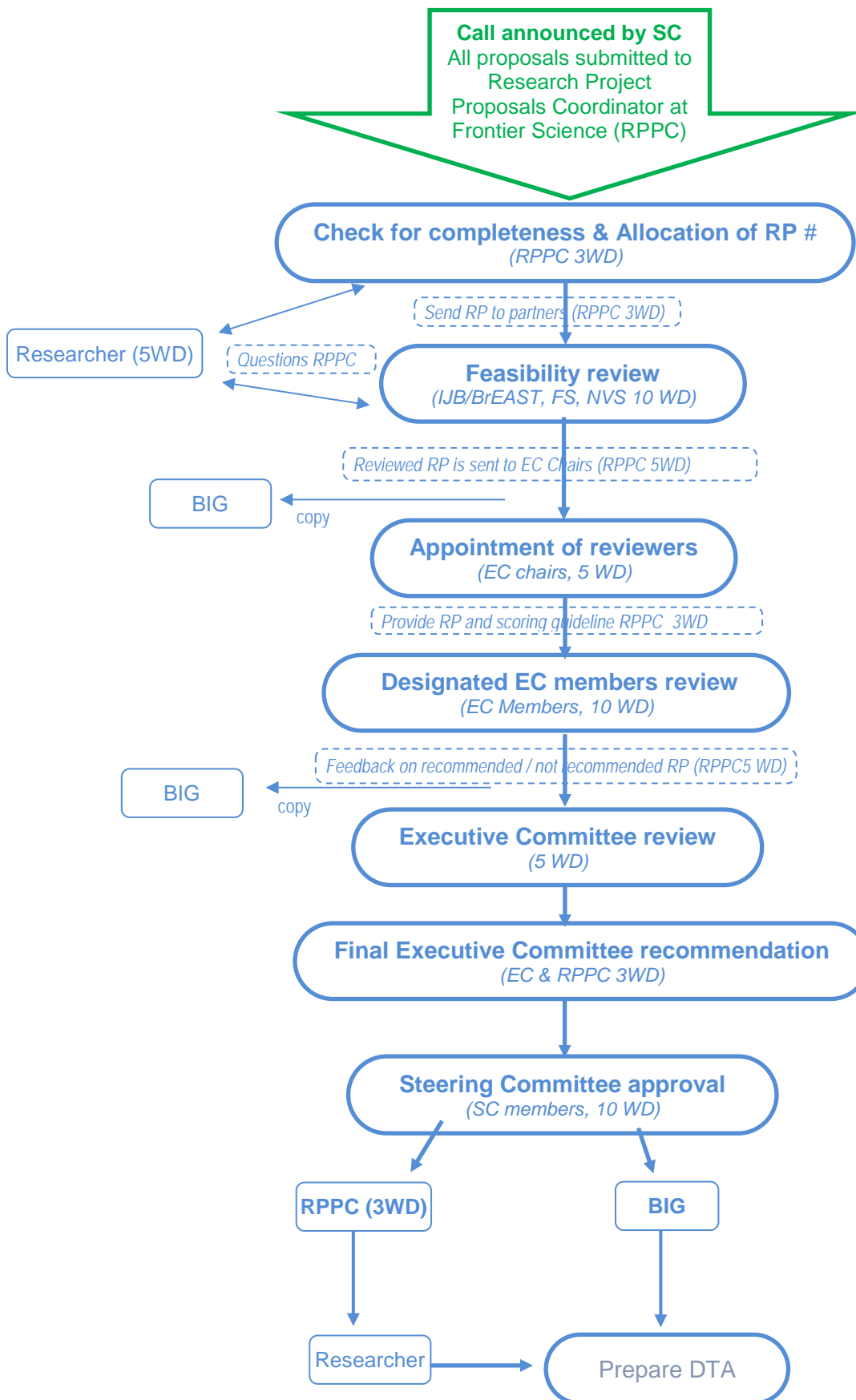
# Appendix 1a: Summary of proposal approval procedures – RESIDUAL BIOLOGICAL SAMPLES



## Abbreviations:

BIG = Breast International Group  
 IJB/BrEAST = Institute Jules Bordet  
 FS = Frontier Science  
 MTA = Materials Transfer Agreement  
 NCI = National Cancer Institute (US)  
 NVS = Novartis  
 RPPC = Research Project Proposals  
 Coordinator  
 SC = Steering Committee  
 TrAC = TRANSALTTO Committee  
 WD = Working Days

## Appendix 1b: Summary of proposal approval procedures – DATA ONLY PROPOSALS



### Abbreviations:

BIG = Breast International Group  
 DTA = DataTransfer Agreement  
 IJB/BrEAST = Institute Jules Bordet  
 FS = Frontier Science  
 NCI = National Cancer Institute (US)  
 NVS = Novartis  
 RPPC = Research Project Proposals  
 Coordinator  
 SC = Steering Committee  
 TrAC = TRANSALTTO Committee  
 WD = Working Days